



# KLS ELECTRONIC CO.,LTD

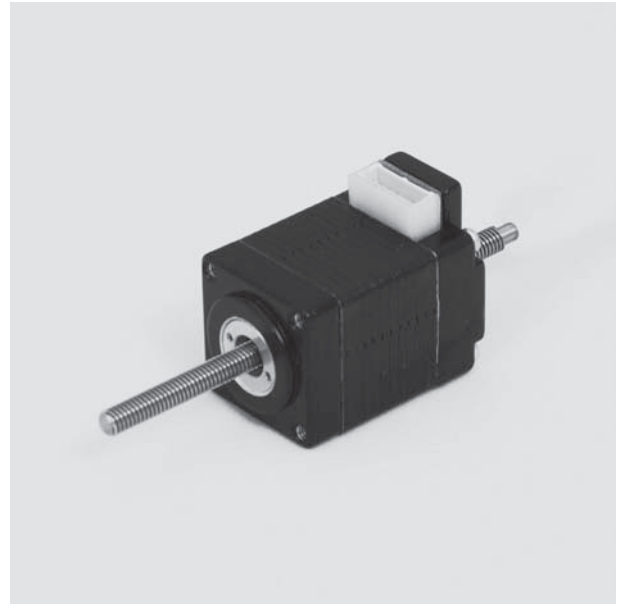
## KLS23-LX08HY Series

### LX08HY Series Introductions

MOONS' LX08HY series (20mm compact) motor is the smallest hybrid linear stepping motor in the world till present. It opens a new avenue for mechanical structure designers who require precise motion with excellent motion control in a very small package.

configurations options :  
Captive / Noncaptive / External NUT

Range of Travel Per Step :  
0.005mm (0.00019") ~ 0.04mm (0.00157")



### ■ General Specifications

- Bi-polar

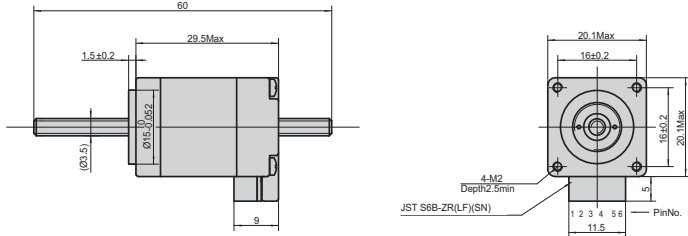
Type	LX08HY201XXX-XX
Rated Current	0.25A
Resistance Per Phase	9 Ω
Inductance Per Phase	1.85mH
Temperature Rise	75 °
Weight	42g
Rotor Inertia	2g*cm <sup>2</sup>

\* Values truncated

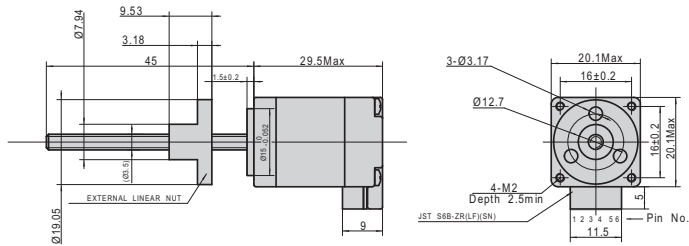
ø3.505				
Lead		Travel Per Step		Order Code
in.	mm	in.	mm	
0.048	1.2192	0.00024	0.00609*	048

## Mechanical Dimension

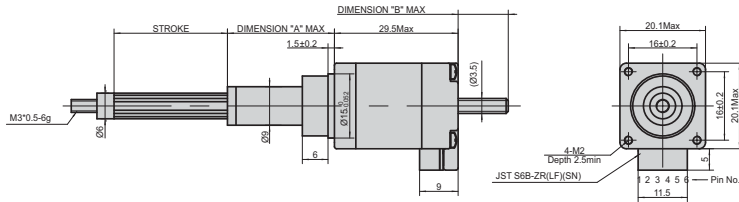
### Noncaptive LN08HY2



### External NUT LE08HY2



### Captive LC08HY2



## Performance Curves

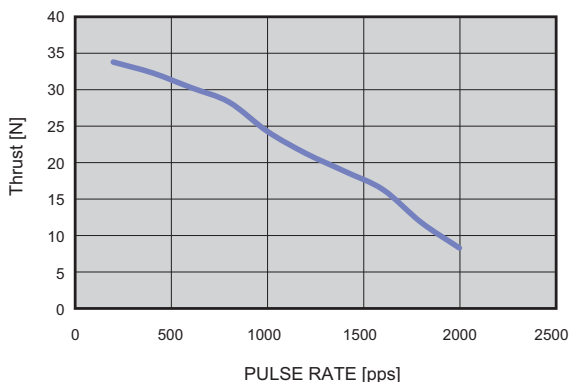
### LX08HY201XXX FORCE VS PULSE RATE

Conditions: Bi-polar Constant Current Driver

Driver: AMA MS3540M

Mode: Full Step

— 048 40V



### LX08HY201XXX FORCE VS LINEAR VELOCITY

Conditions: Bi-polar Constant Current Driver

Driver: AMA MS3540M

Mode: Full Step

— 048 40V

