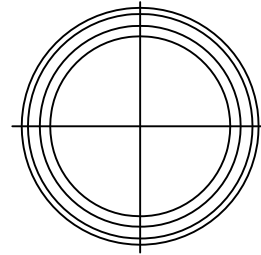
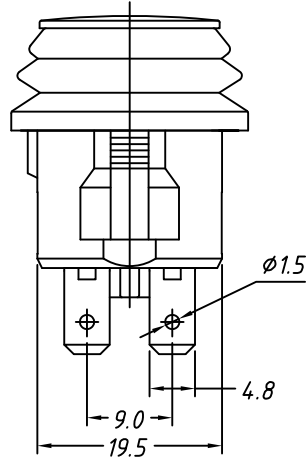
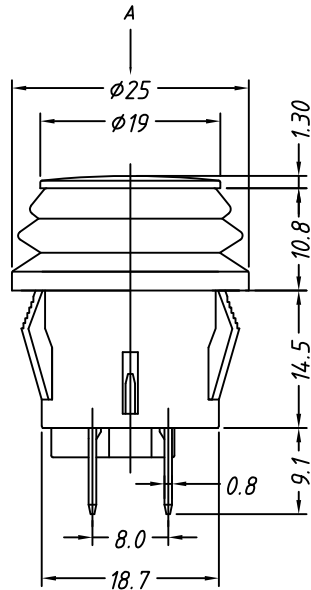
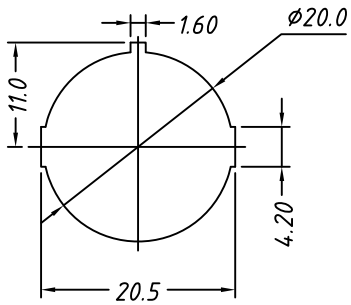


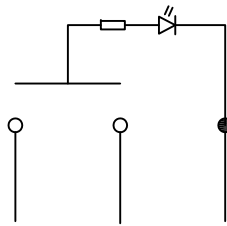
RoHS Compliant



A View



Panel Mounting



Circuitry

Electrical

Rated voltage/current: 10A 125V AC
6A 250V AC
20A 12V DC

Contact Resistance: 50 mΩ
Insulation resistance: 100MΩ/DC500V
Withstand voltage: AC1500V / 1 min
Temp. Range: -25 °C ~ +85 °C
Life: 10000 cycles

Order Information

L-KLS7- AW029 - X X

RoHS Automotive switch product

Voltage Code: 1- 20A 12V DC
2- 10A125V AC
3- 6A 250V AC

Lamp Color: 0- without lamp
1- Red
2- White
3- Green
4- Yellow
5- Blue

GENERAL TOLERANCE		ANGLE TOLERANCE		Description:	
X. ±0.60		X. ±5°		Automotive Switch	
.X ±0.38		.X ±3°		KLS P/N:	KLS7-AW029-XX
.XX ±0.25		.XX ±2°			
Draw by	2015-09-01	PROJECTION		NingBo KLS ELECTRONIC CO.,L TD.	
Check by	2015-09-15	UNITS	mm		
SCALE		SHEET SIZE	A4		