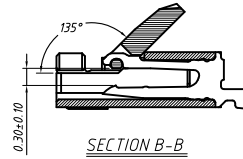


SECTION A-A  
SCALE 1:1

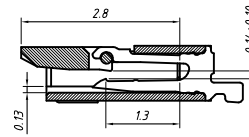
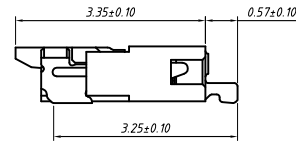
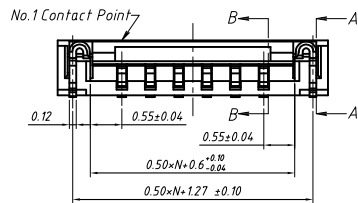


SECTION B-B  
SCALE 1:1  
When cover is opened

**Material**  
 Housing: LCP, UL 94 V-0  
 Cover: NY9T, UL 94 V-0  
 Terminal: P/B C5210-SH, Gold/Tin  
 PEG: P/B C5191-H, Gold/Tin

**Electrical**  
 Voltage rating: 50 V  
 Current rating: 0.4 A

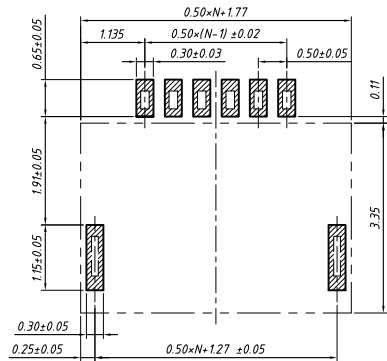
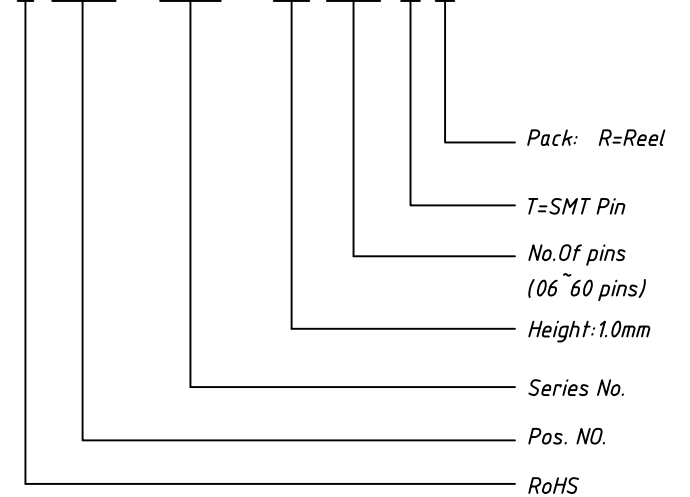
**Mechanical**  
 Temp. Range: -40 °C ~ +105 °C



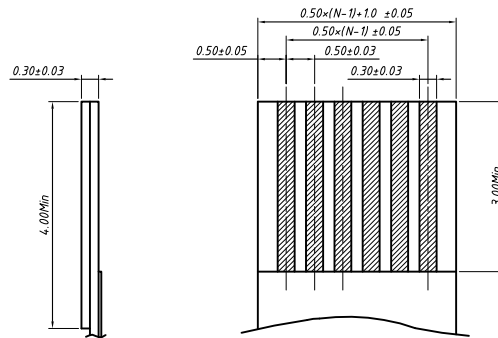
SECTION B-B  
SCALE 1:1  
Length to contact point

**Order Information**

L-KLS1- 242G - 1.0- XX -T-R



PCB Layout



Applicable FPC

GENERAL TOLERANCE		ANGLE TOLERANCE		PROJECTION		Description:	
X	±0.15	X	±5°	UNITS	mm	CONN FFC 0.50mm,SMD, Horizontal, Lower Contact , with ZIF L-KLS1-242G-1.0-XX-T-R	
.X	±0.03	.X	±3°	SHEET SIZE	A4		
.XX	±0.05	.XX	±2°	KLS P/N:			

Draw by: Date	2018-03-10
Check by: Date	2018-03-10
SCALE	SHEET OF

**KLS**  
 NingBo KLS ELECTRONIC CO.,LTD.