

Material:
 Housing: PC
 Flammability Rating : UL94V-2
 Contacts: Phosphor Bronze T=0.50mm
 Plating: TIN Plating

Electrical:
 Voltage Rating: 125VAC
 Current Rating: 1.5A
 Contact Resistance: 30mΩ Max.
 Insulation Resistance: 500MΩ Min. at 500V dc
 Dielectric Strength: 1000VAC Rms 50Hz, 1 Min.
 Durability: 750 cycles Min.
 Operation Temperature: -40°C ~ +85°C

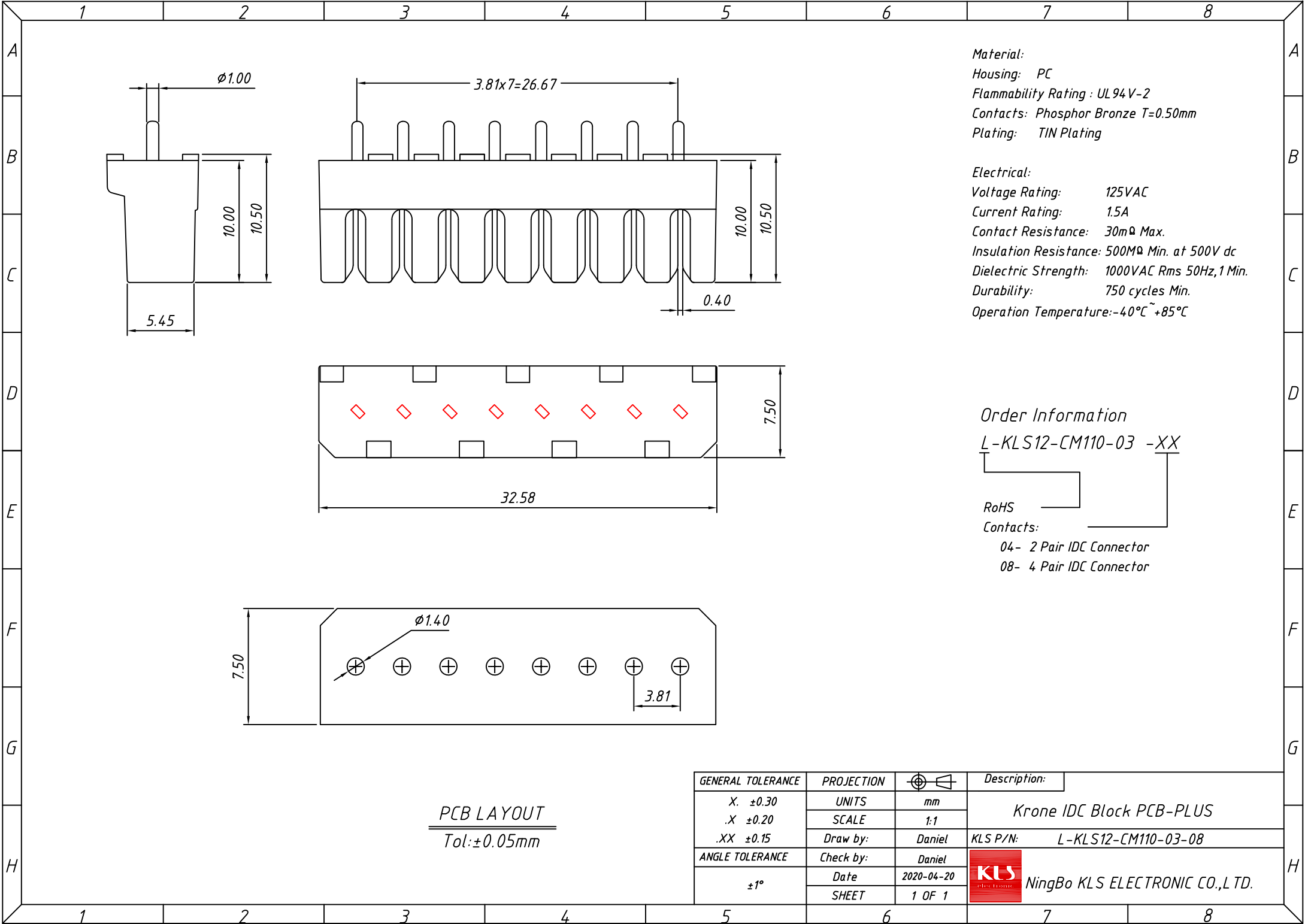
Order Information

L-KLS12-CM110-03 -XX

RoHS
 Contacts:
 04- 2 Pair IDC Connector
 08- 4 Pair IDC Connector

PCB LAYOUT
 Tol: ±0.05mm

| GENERAL TOLERANCE | PROJECTION | | Description: |
|-------------------|------------|------------|--------------------------------|
| .X ±0.30 | UNITS | mm | Krone IDC Block PCB-PLUS |
| .X ±0.20 | SCALE | 1:1 | |
| .XX ±0.15 | Draw by: | Daniel | |
| ANGLE TOLERANCE | Check by: | Daniel | KLS P/N: L-KLS12-CM110-03-04 |
| ±1° | Date | 2020-04-20 | NingBo KLS ELECTRONIC CO.,LTD. |
| | SHEET | 1 OF 1 | |



Material:
Housing: PC
Flammability Rating : UL94V-2
Contacts: Phosphor Bronze T=0.50mm
Plating: TIN Plating

Electrical:
Voltage Rating: 125VAC
Current Rating: 1.5A
Contact Resistance: 30mΩ Max.
Insulation Resistance: 500MΩ Min. at 500V dc
Dielectric Strength: 1000VAC Rms 50Hz, 1 Min.
Durability: 750 cycles Min.
Operation Temperature: -40°C ~ +85°C

Order Information

L-KLS12-CM110-03 -XX

RoHS
Contacts:
04- 2 Pair IDC Connector
08- 4 Pair IDC Connector

PCB LAYOUT
Tol: ±0.05mm

| | | | |
|-------------------|------------|------------|--------------------------------|
| GENERAL TOLERANCE | PROJECTION | | Description: |
| .X ±0.30 | UNITS | mm | Krone IDC Block PCB-PLUS |
| .X ±0.20 | SCALE | 1:1 | |
| .XX ±0.15 | Draw by: | Daniel | |
| ANGLE TOLERANCE | Check by: | Daniel | KLS P/N: L-KLS12-CM110-03-08 |
| ±1° | Date | 2020-04-20 | NingBo KLS ELECTRONIC CO.,LTD. |
| | SHEET | 1 OF 1 | |