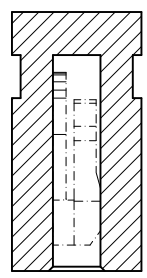
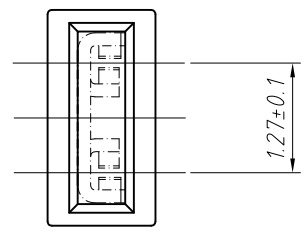
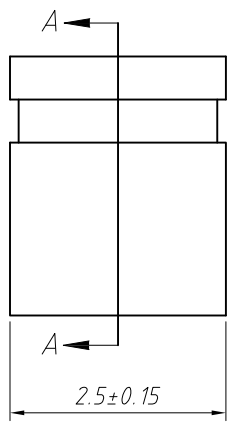
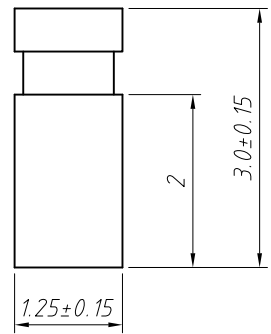
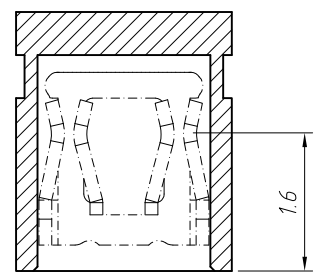


1  
RoHS Compliance



SECTION A-A



Material:  
Standard:PBT  
Contact:Phosphor Bronze  
Contact Plating:Au Over Ni  
Insulator:Polyester,UL94V-0

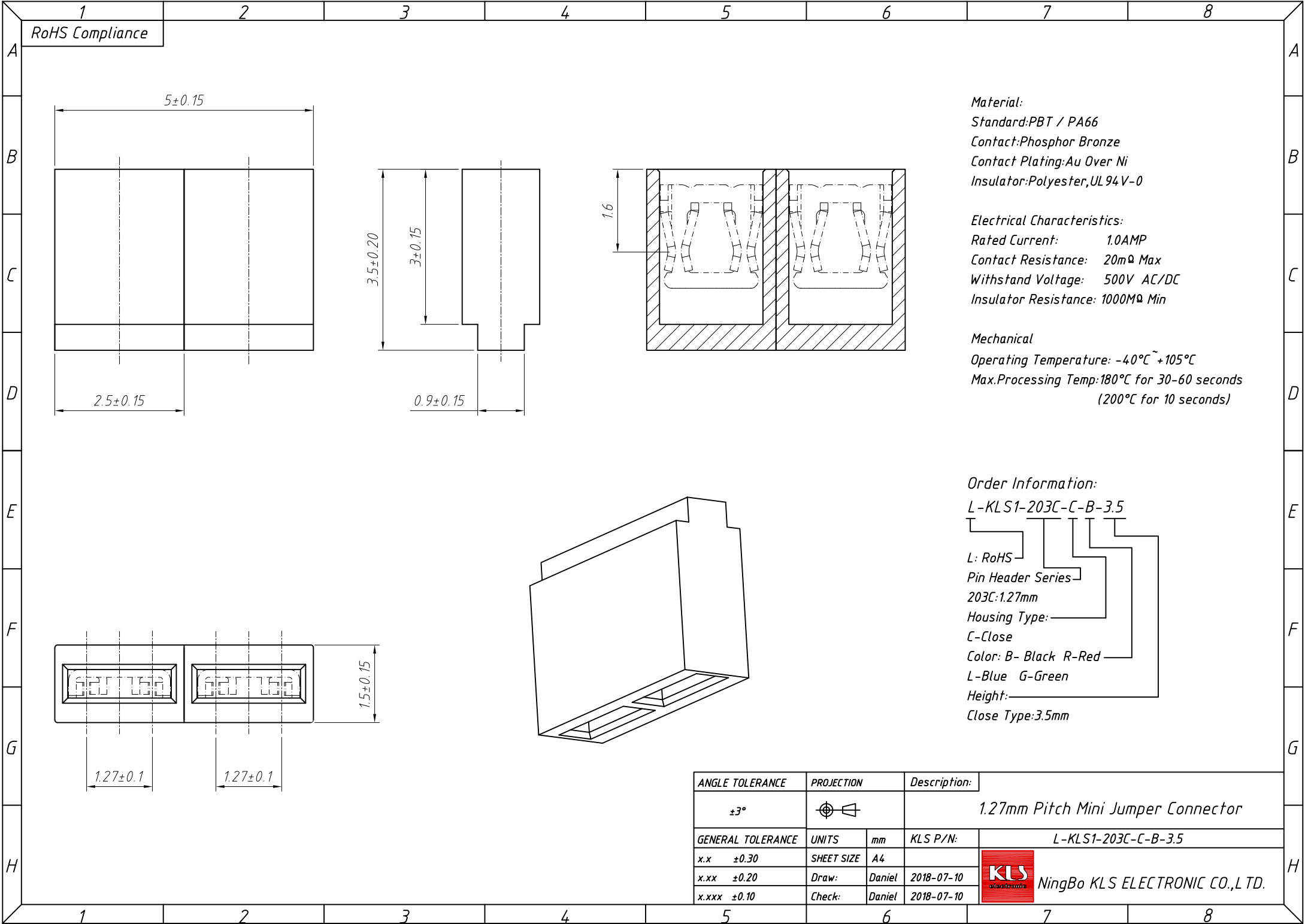
Electrical Characteristics:  
Rated Current: 1.0AMP  
Contact Resistance: 20mΩ Max  
Withstand Voltage: 500V AC/DC  
Insulator Resistance: 1000MΩ Min

Mechanical  
Operating Temperature: -40°C ~ +105°C  
Max.Processing Temp:180°C for 30-60 seconds  
(200°C for 10 seconds)

Order Information:  
L-KLS1-203C-C-B-3.0  
L: RoHS  
Pin Header Series  
203C:1.27mm  
Housing Type:  
C-Close  
Color: B- Black R-Red  
L-Blue G-Green  
Height:  
Close Type:3.0mm

ANGLE TOLERANCE	PROJECTION	Description:
±3°		1.27mm Pitch Mini Jumper Connector
GENERAL TOLERANCE	UNITS	mm
x.x ±0.30	SHEET SIZE	A4
x.xx ±0.20	Draw:	Daniel 2018-07-10
x.xxx ±0.10	Check:	Daniel 2018-07-10
		KLS NingBo KLS ELECTRONIC CO.,LTD.

1  
RoHS Compliance



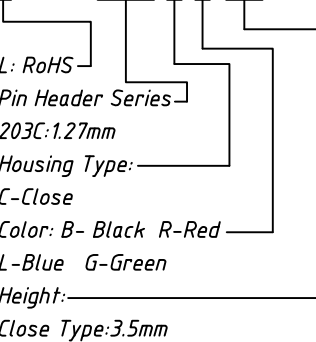
**Material:**  
 Standard:PBT / PA66  
 Contact:Phosphor Bronze  
 Contact Plating:Au Over Ni  
 Insulator:Polyester,UL94V-0

**Electrical Characteristics:**  
 Rated Current: 1.0AMP  
 Contact Resistance: 20mΩ Max  
 Withstand Voltage: 500V AC/DC  
 Insulator Resistance: 1000MΩ Min

**Mechanical**  
 Operating Temperature: -40°C ~ +105°C  
 Max.Processing Temp:180°C for 30-60 seconds  
 (200°C for 10 seconds)

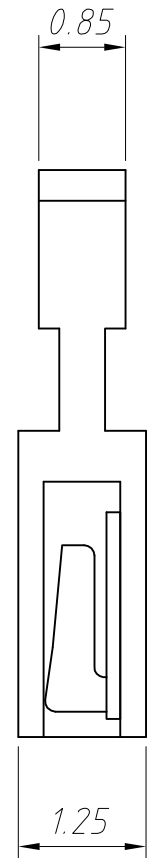
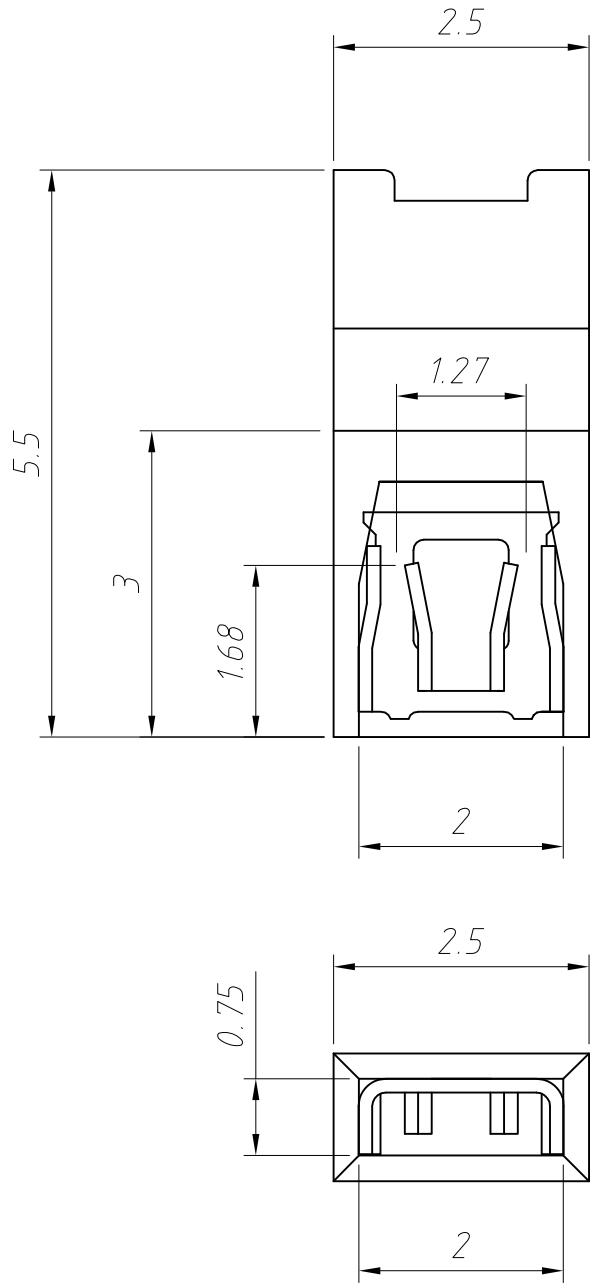
**Order Information:**

L-KLS1-203C-C-B-3.5



ANGLE TOLERANCE	PROJECTION	Description:
±3°		1.27mm Pitch Mini Jumper Connector
GENERAL TOLERANCE	UNITS	mm
x.x ±0.30	SHEET SIZE	A4
x.xx ±0.20	Draw:	Daniel 2018-07-10
x.xxx ±0.10	Check:	Daniel 2018-07-10
		KLS P/N: L-KLS1-203C-C-B-3.5
		NingBo KLS ELECTRONIC CO.,LTD.

1  
RoHS Compliance



**Material:**  
 Standard:PBT  
 Contact:Phosphor Bronze  
 Contact Plating:Au Over Ni  
 Insulator:Polyester,UL94V-0

**Electrical Characteristics:**  
 Rated Current: 1.0AMP  
 Contact Resistance: 20mΩ Max  
 Withstand Voltage: 500V AC/DC  
 Insulator Resistance: 1000MΩ Min

**Mechanical**  
 Operating Temperature: -40°C ~ +105°C  
 Max.Processing Temp:180°C for 30-60 seconds  
 (200°C for 10 seconds)

**Order Information:**  
 L-KLS1-203C-0-B-5.5

L: RoHS  
 Pin Header Series  
 203C:1.27mm  
 Housing Type:  
 0-Open  
 Color: B- Black R-Red  
 L-Blue G-Green  
 Height:  
 Close Type:5.5mm

ANGLE TOLERANCE	PROJECTION	Description:	
±3°		1.27mm Pitch Mini Jumper Connector	
GENERAL TOLERANCE	UNITS	mm	KLS P/N:
x.x ±0.30	SHEET SIZE	A4	L-KLS1-203C-0-B-5.5
x.xx ±0.20	Draw:	Daniel	2018-07-10
x.xxx ±0.10	Check:	Daniel	2018-07-10

