



**Overload Switches**

**KLS7-ST-002 Manual Reset Circuit Breaker**

**Specification:**

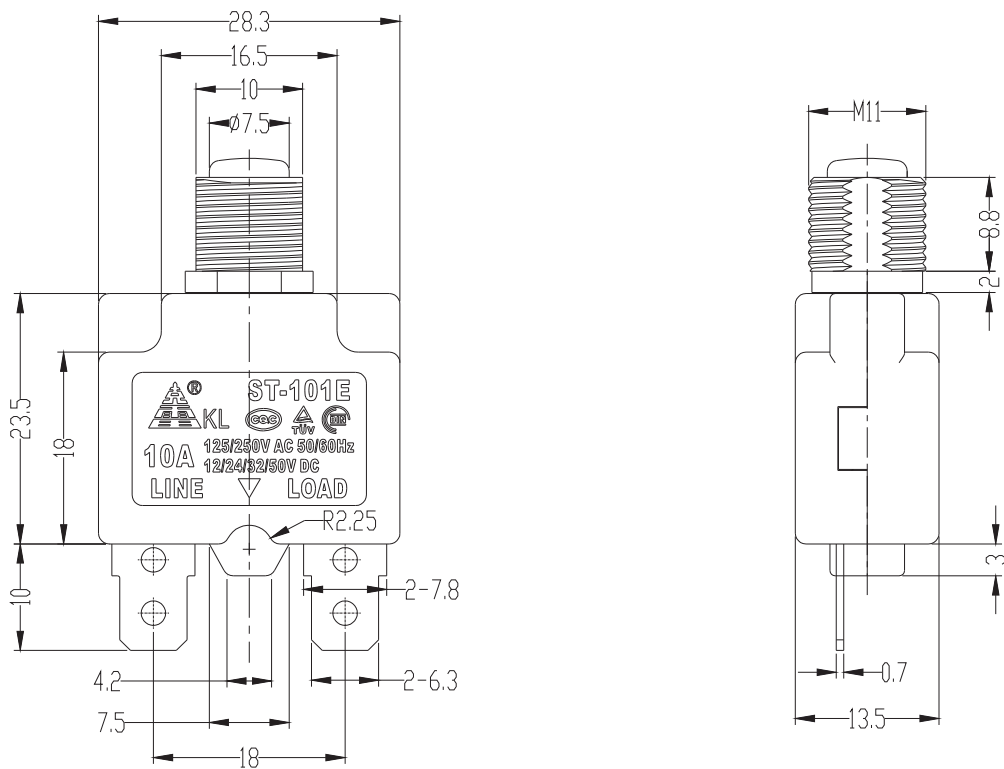
- 1. Rating current : min.5A, max.16A
- 2. Working pressure : min.12V, max.250V
- 3. Double usage of DC and AC
- 4. Current specification : 5-16A TUV

**Application scope :**

Used at the protection of compound outlet, power transformer and electrical motor.



Dimension for outline:



**ORDER INFORMATION**

Product NO.: **KLS7-ST-002**





**Overload Switches**

**KLS7-ST-002 Manual Reset Circuit Breaker**

**Specification:**

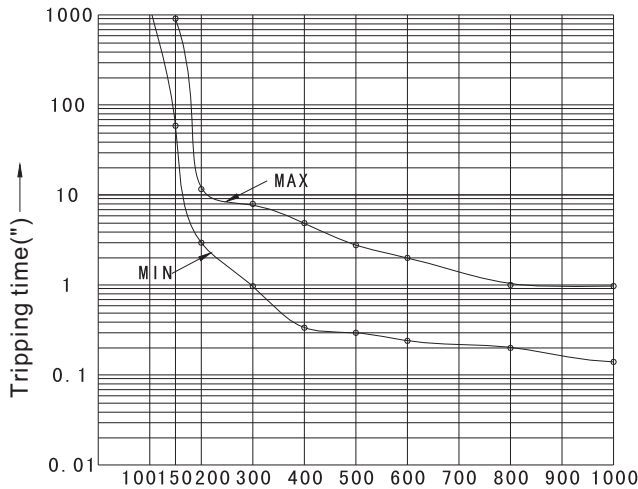
- 1. Rating current : min.5A, max.16A
- 2. Working pressure : min.12V, max.250V
- 3. Double usage of DC and AC
- 4. Current specification : 5-16A TUV

**Application scope :**

Used at the protection of compound outlet, power transformer and electrical motor.



Technique characteristic:the test temperature(20°-25°), the reference curve as followed:



Short circuit test, the ambient temperature:25°

current overload rating current PCT	Tripping time
105 %	1 hour no tripping
150 %	1 hour tripping
200 %	3. 0-18"
300 %	0. 8-8"
400 %	0. 35-5"
500 %	0. 3-2. 8"
600 %	0. 25-2"
800 %	0. 2-1"
1000 %	0. 15-0. 8"

**ORDER INFORMATION**

Product NO.: KLS7-ST-002

Pos. NO. \_\_\_\_\_

Series No. \_\_\_\_\_