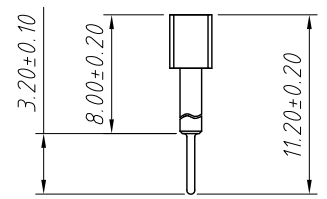
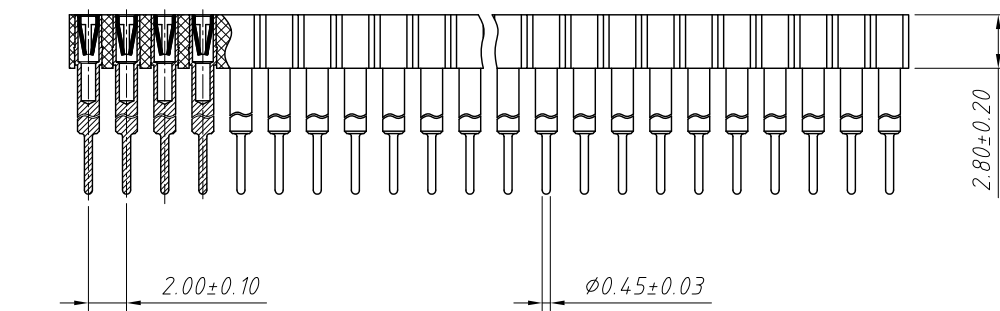


Material:
 Housing: 30% Glass filled PBT UL94V-0
 Contacts: Beryllium copper or Phosphor Bronze
 Plating: Gold 3u" over 50u" nickel

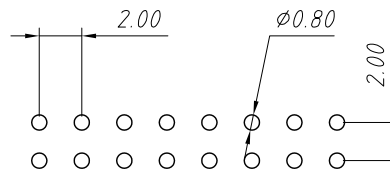
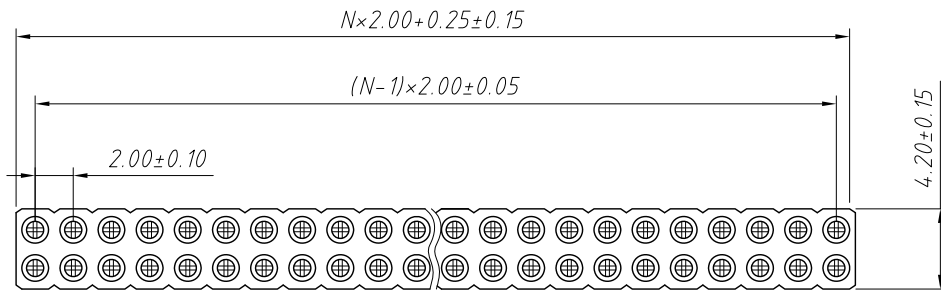
Electrical Characteristics:
 Current Rating: 1.0 AMP
 Insulator Resistance: 5000M Ω min. at DC 500V
 Contact Resistance: 20m Ω max. at DC 100mA
 Operating Temperature: -40°C ~ +105°C

Order Information:
 L-KLS1-209BA-1-XX-S-Y

- L: RoHS
- IC Socket
- Row: 1-Single layer
- 2-Double layer
- XX-No. of 01~80pin
- S-Straight Pin 11.2mm
- S2-Straight Pin 9.4mm
- Y-Imported Beryllium copper
- NONE-Domestic Phosphor Bronze



GENERAL TOLERANCE	PROJECTION		Description:
X. ±0.50	UNITS	mm	2.0mm Pitch SIP Socket Connector
.X ±0.25	SCALE	1:1	
.XX ±0.10	Draw by:	Jenny	
ANGLE TOLERANCE	Check by:		KLS P/N: L-KLS1-209BA-1-XX-S-Y
X. ±5°	Date	2018-03-01	NingBo KLS ELECTRONIC CO.,L TD.
.X ±3°	SHEET	1 OF 1	
.XX ±2°			



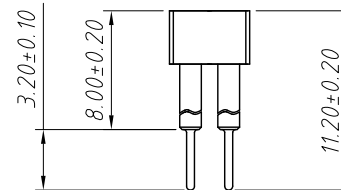
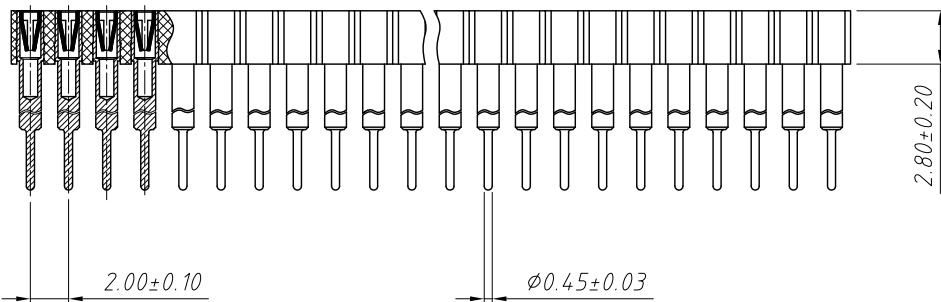
Recommended P.C. Board Layout

Material:

Housing: 30% Glass filled PBT UL94V-0
 Contacts: Beryllium copper or Phosphor Bronze
 Plating: Gold 3u" over 50u" nickel

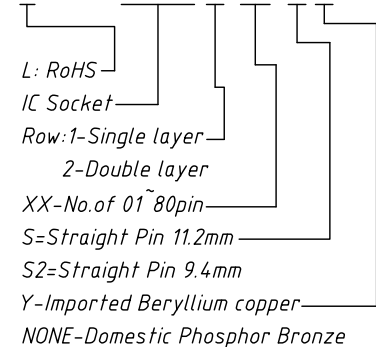
Electrical Characteristics:

Current Rating: 1.0 AMP
 Insulator Resistance: 5000MΩ min. at DC 500V
 Contact Resistance: 20mΩ max. at DC 100mA
 Operating Temperature: -40°C ~ +105°C

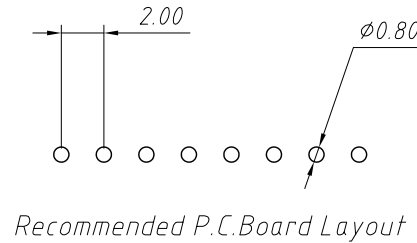
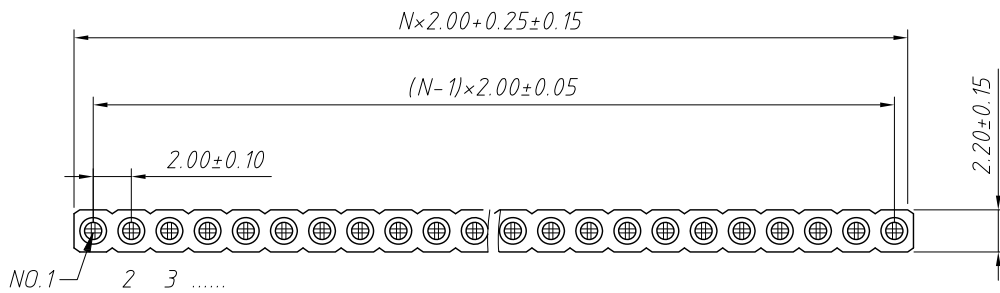


Order Information:

L-KLS1-209BA-2-XX-S-Y



GENERAL TOLERANCE	PROJECTION		Description:
X. ±0.50	UNITS	mm	2.0mm Pitch SIP Socket Connector
.X ±0.25	SCALE	1:1	
.XX ±0.10	Draw by:	Jenny	
ANGLE TOLERANCE	Check by:		KLS P/N: L-KLS1-209BA-2-XX-S-Y
X. ±5°	Date	2018-03-01	NingBo KLS ELECTRONIC CO.,L TD.
.X ±3°	SHEET	1 OF 1	
.XX ±2°			



Material:

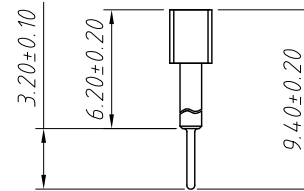
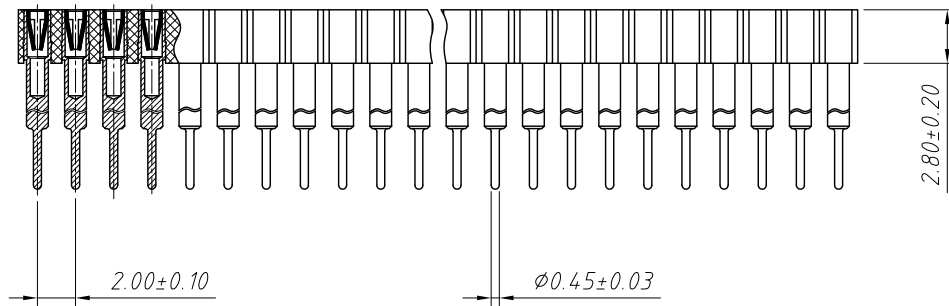
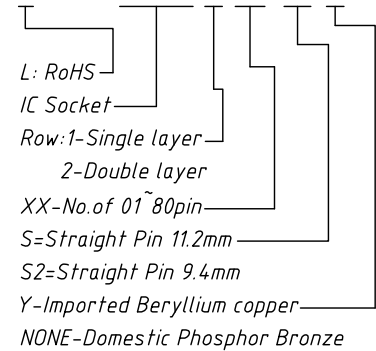
Housing: 30% Glass filled PBT UL94V-0
 Contacts: Beryllium copper or Phosphor Bronze
 Plating: Gold 3u" over 50u" nickel

Electrical Characteristics:

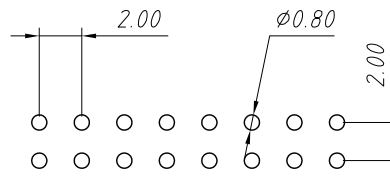
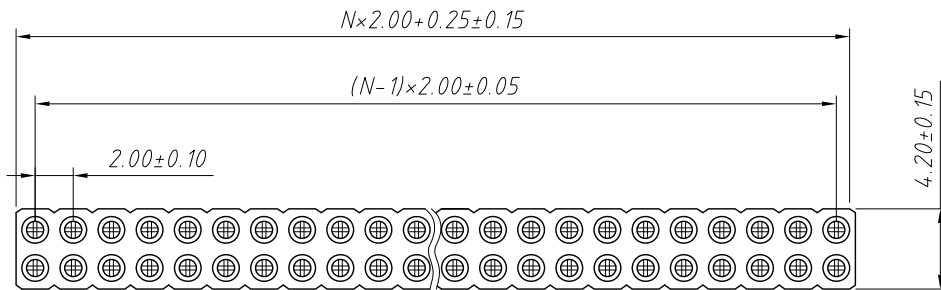
Current Rating: 1.0 AMP
 Insulator Resistance: 5000M Ω min. at DC 500V
 Contact Resistance: 20m Ω max. at DC 100mA
 Operating Temperature: -40°C ~ +105°C

Order Information:

L-KLS1-209BA-1-XX-S2-Y



GENERAL TOLERANCE	PROJECTION		Description:
X. ±0.50	UNITS	mm	2.0mm Pitch SIP Socket Connector
.X ±0.25	SCALE	1:1	
.XX ±0.10	Draw by:	Jenny	
ANGLE TOLERANCE	Check by:		L-KLS1-209BA-1-XX-S2-Y
X. ±5°	Date	2018-03-01	NingBo KLS ELECTRONIC CO.,L TD.
.X ±3°	SHEET	1 OF 1	
.XX ±2°			



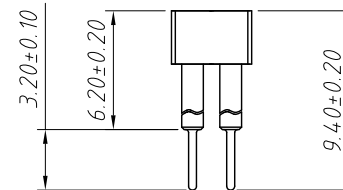
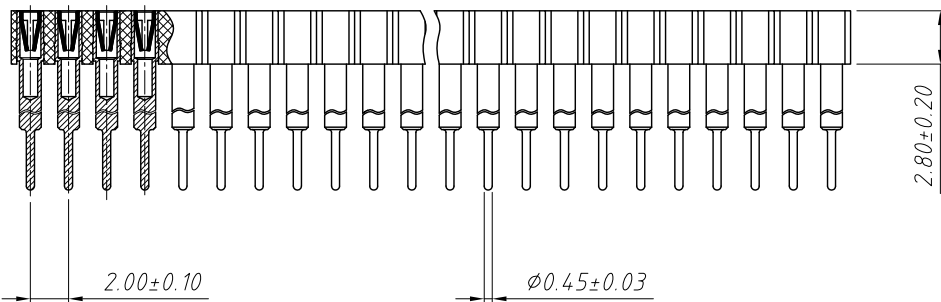
Recommended P.C. Board Layout

Material:

Housing: 30% Glass filled PBT UL94V-0
 Contacts: Beryllium copper or Phosphor Bronze
 Plating: Gold 3u" over 50u" nickel

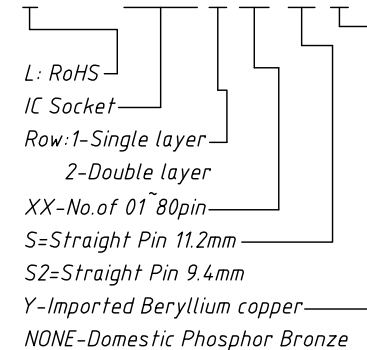
Electrical Characteristics:

Current Rating: 1.0 AMP
 Insulator Resistance: 5000M Ω min. at DC 500V
 Contact Resistance: 20m Ω max. at DC 100mA
 Operating Temperature: -40°C ~ +105°C



Order Information:

L-KLS1-209BA-2-XX-S2-Y



GENERAL TOLERANCE	PROJECTION		Description:
X. ± 0.50	UNITS	mm	2.0mm Pitch SIP Socket Connector
.X ± 0.25	SCALE	1:1	
.XX ± 0.10	Draw by:	Jenny	
ANGLE TOLERANCE	Check by:		KLS P/N: L-KLS1-209BA-2-XX-S2-Y
X. $\pm 5^\circ$	Date	2018-03-01	NingBo KLS ELECTRONIC CO.,L TD.
.X $\pm 3^\circ$	SHEET	1 OF 1	
.XX $\pm 2^\circ$			