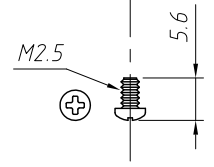
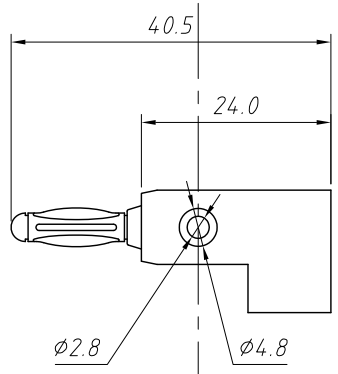
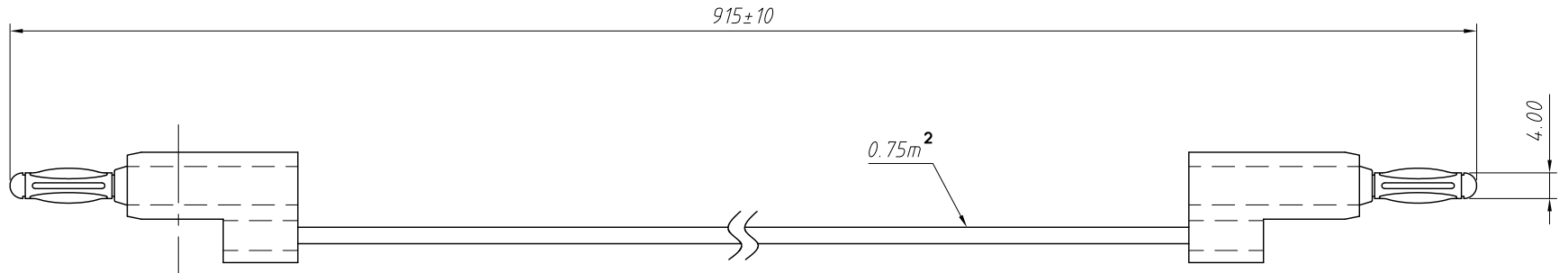


1
RoHS Compliance



- Test lead with stackable, 4mm banana plugs on each end. The banana plugs mate with any standard 4mm banana jack.
 - Constructed with PVC-jacketed, 18 AWG test lead wire and has color matching overmolded banana plugs.
 - Materials:
Banana plug: Nickel-plated beryllium copper
Wire insulation: PVC
Overmold: Polypropylene
 - Ratings:
Current: 15 Amps
Voltage: Hands-free testing to 1000V
 - Length: Standard lengths: 85mm
 - Color: B-Black G-Green R-Red
 - RoHS 3 compliant
- Order Information:
CAB515-BAP-914-B
Color: _____
B-Black G-Green R-Red

GENERAL TOLERANCE	PROJECTION		Description:
X. ±0.50	UNITS	mm	Stackable Banana Plugs Each End
.X ±0.25	SCALE	1:1.5	
.XX ±0.10	Draw by:	Jenny	
ANGLE TOLERANCE	Check by:		KLS P/N: CAB515-BAP-914-B
X. ±5°	Date	2021-04-15	NingBo KLS ELECTRONIC CO.,L TD.
.X ±3°	SHEET	1 OF 1	
.XX ±2°			