

AV-F7010



SIZE:

70x70x10mm

construction:

Glass Fiber reinforced plastic;
Impeller and housing PBT

OPERATING TEMPERATURE:

Sleeve bearing -10°C to +70°C

INSULATION RESISTANCE:

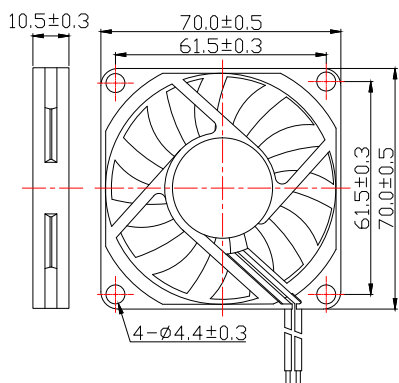
10meg Ohm min, at 500 VDC
(between frame and terminal)

DIELECTRIC STRENGTH:

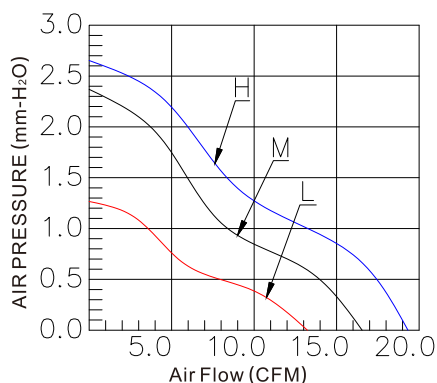
5mA max, at 500 VAC 60Hz one minute
(between frame and terminal)

Dimensions Drawing

Unit:mm



Characteristic Curves



Specifications

Carton Specifications (Unit: cm):31x29x36.5 QTY:500pcs GW:12.85Kg

Model	Bearing Type	Rated Voltage	Operation Voltage	Current	Speed	Air Flow	Static Pressure	Noise Level	Weight
		VDC	VDC	A	RPM	CFM	mmH ₂ O	dBA	g
AV-F7010HS	Sleeve	12	10.8~13.2	0.21	3500	19.13	2.65	32.60	24.2
AV-F7010MS	Sleeve	12	10.8~13.2	0.14	3000	16.39	2.48	27.95	24.2
AV-F7010LS	Sleeve	12	10.8~13.2	0.10	2500	13.31	1.28	23.86	24.2
AV-F7010HB	Ball	12	10.8~13.2	0.21	3500	19.13	2.65	32.60	24.2
AV-F7010MB	Ball	12	10.8~13.2	0.14	3000	16.39	2.48	27.95	24.2
AV-F7010LB	Ball	12	10.8~13.2	0.10	2500	13.31	1.28	23.86	24.2
AV-F7010HS24	Sleeve	24	21.6~26.4	0.13	3500	19.13	2.65	32.60	24.2
AV-F7010MS24	Sleeve	24	21.6~26.4	0.11	3000	16.39	2.48	27.95	24.2
AV-F7010LS24	Sleeve	24	21.6~26.4	0.08	2500	13.31	1.28	23.86	24.2
AV-F7010HB24	Ball	24	21.6~26.4	0.13	3500	19.13	2.65	32.60	24.2
AV-F7010MB24	Ball	24	21.6~26.4	0.11	3000	16.39	2.48	27.95	24.2
AV-F7010LB24	Ball	24	21.6~26.4	0.08	2500	13.31	1.28	23.86	24.2